

VT-4000 VEHICLE TRACKER



TRACKING YOUR FLEET HAS NEVER BEEN EASIER!

A quick and easy plug-in and go solution to track, monitor and manage your fleet! SolarTrak's Vehicle Tracker VT-4000 uses the OBD-II port located in your vehicle to gather and report information, allowing your fleet to work harder... and better for you!

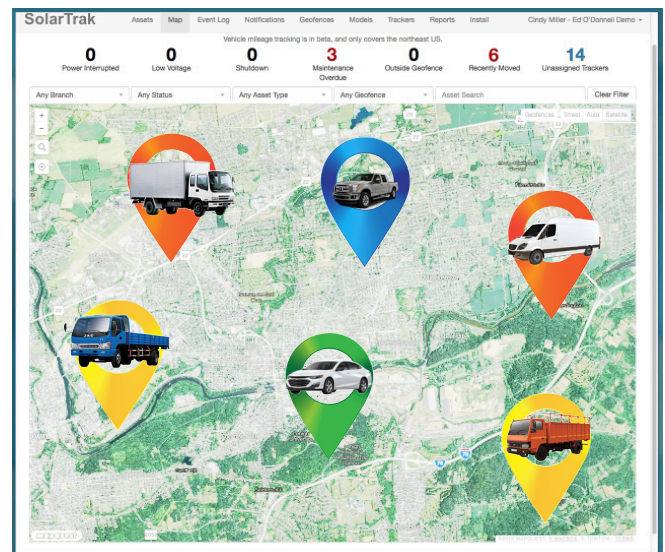
The VT-4000 unit includes a Vehicle Mileage License, which offers broader reporting options, including: daily replay of routes traveled, max speed reached, maintenance reminders based on mileage, mileage by state reporting for easy IFTA fuel tax reporting.

For **just under \$13 per month** per unit, you'll NEVER miss out on a job because your equipment can't be located!



MONITOR & MANAGE YOUR ASSETS

- Easy to install- just plug into your OBD-II port, assign your tracker, and you are all set!
- Replay the vehicle route per day via an animated route map, part of the Vehicle Mileage License included with each VT-4000.
- Track your fleet's daily, weekly and monthly total engine hours, as well as daily starts/stops via the Engine Calendar.
- Better speed monitoring for your fleet. Set speed limits and receive a notification when a vehicle exceeds the threshold.
- Create geofences - equipment borders (i. e., the perimeters of the work zone). Receive alerts if equipment moves in or out of the zone.
- Receive text alerts when your equipment moves or requires servicing.
- Manage, monitor and track your equipment from your PC or Smartphone.



Affordable GPS Fleet Management
...less than \$13 per tracker per month!

Call for a FREE Demo!
1-484-223-4994

www.solar-trak.com

created by
Solar Technology, Inc. 



Plug-In and Go Fleet Tracking and Management Solutions

Easy to install - nothing for you to adjust or manually configure.
Simply plug the VT-4000 into your OBD-II port in your vehicle, assign and go!

SIMPLE TO INSTALL

1. Locate the OBD-II port in your vehicle. Most commonly found just underneath your dashboard. If the port has a cover over it, please remove.
2. Plug the tracker into the port and wait for the LED indicators to illuminate.
3. Next, call SolarTrak to set up your account and we'll activate the system.

You're ready to go!

LED INDICATORS

GREEN

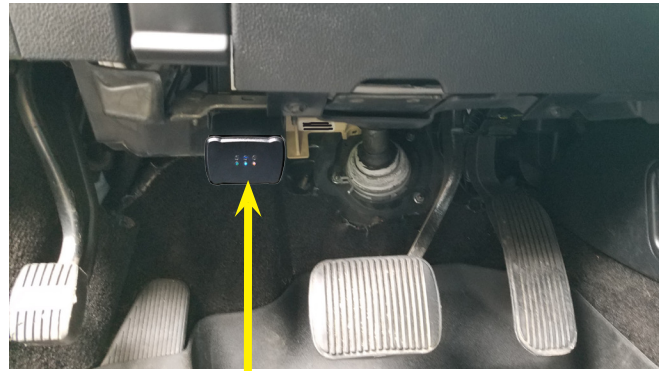
Solid: No GPS Lock
Blinking: GPS Lock

BLUE

Solid: Searching for WAN
Blinking: WAN Connected

AMBER

Problems



OBD-II port location

ENHANCED REPORTING

The SolarTrak VT-4000 Vehicle Trackers provide you with all the standard reporting features available on all our Trackers, as well as enhanced reports only available with a vehicle mileage license - a standard feature on the VT-4000!

These enhanced reports provide a more in-depth view of fleet activity, which include:

DAILY REPLAY

Track the route your vehicles drive daily. Provides beginning and ending location addresses, as well as start/stop time.

DIAGNOSTIC CODES

Should your vehicle encounter any issues upon start up, the diagnostic code(s) will be displayed on its asset page in SolarTrak.

IFTA REPORTING

Provides an easily expored report with information on miles driven by state.

SPEED ALERTS

Set a speed limit for your fleet and receive notifications when the threshold has been exceeded.

AUTOMATIC MAINTENANCE ALERTS

Follow the manufacturer's maintenance schedule to keep your fleet healthy. Receive email or text alerts when routine maintenance is due.

SPECIFICATIONS

DIMENSIONS	2.4" x 1.8" x 1.1" (5.9 x 4.6 x 2.8 cm)
WEIGHT	<2 oz. (34 g)
DEVICE CONNECTOR	OBD-II
POWER SOURCE	Vehicle Power
DC POWER	DC 9-19V
OPERATING TEMPERATURE	-13°F to 158 °F (-25°C to 70°C)

WARRANTY INFORMATION

PURCHASE: 5-Year Limited Warranty

RENT: Under warranty for the duration of the lease, with the exception of physical damage or misuse of unit.



484-223-4994



info@solar-trak.com



www.solar-trak.com



Solar Technology, Inc.
7620 Cetronia Rd. Allentown, PA 18106



In compliance with
Telematics Data Standards



Made in the USA