



Silent Messenger 3 Line 8 Character Message Board

USES AND ADVANTAGES

For budget sensitive customers who do not require a full matrix board, SolarTech offers an affordable alternative: you can opt to have our Full Size MB configured as a 3-Line 8-Character display.

This portable changeable message sign includes a sturdy steel trailer, and is powered by a combination of solar panels and batteries. The sign raises on a lift and rotate mast, and can be aligned for optimal visibility.

The 3-Line 8-Character board option consists of a 126" w x 76" h sign panel with 3 rows of 8 modules (each module with a 5 x 7 pixel array of LED's).

Available options and upgrades include: Remote access, additional solar panels, battery upgrades, radar, and security options.

OPTIONAL REMOTE COMMUNICATIONS AND GPS TRACKING UPGRADE

The upgrade includes a GPS receiver, cellular transceiver, **FREE lifetime cellular service***, and access to Command Center.

Manage your fleet from your laptop, PC or smartphone... without leaving your desk!

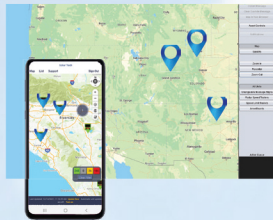
Control units individually or broadcast to a group.

Access units from a map or list.

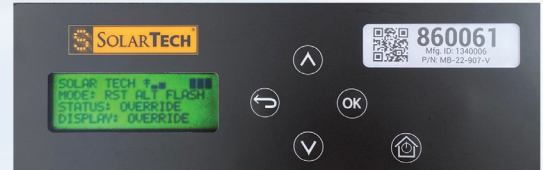
Build a message library, share messages between boards, schedule messages and more.

Set up automatic email notifications when a message changes, if the battery voltage is low, if a pixel fails, or if the unit moves.

View battery analytics and the history of displayed messages.



EASY-TO-USE MICROTECH CONTROLLER



- Touchpad interface
- Easy to manage menu: Pre-loaded messages
- USB Plug-in silicone keyboard
- Password Protection: 4 digit pin passcode to access all functions
- Fully networkable
- NTCIP version 3 compatible
- NO manual required- they are that easy to use!



Silent Messenger 3 Line 8 Character Message Board

DISPLAY

Panel Size	120" x 70" (305 cm x 178 cm)
Panel Construction	All aluminum, modular construction
Panel Face	3/16" polycarbonate, non-glare
Pixel Pitch	2.6" x 2.6" (66 mm x 66 mm)
Characters per Line	Eight (8)
Number of Lines	Three (3)
Number of Fonts	One (1)
Character Height	18" (46 cm)
Graphics Capability	limited (chevrons and arrows)
Display Technology	LED (amber, 592 nm)
Display Brightness	>10,000 candela per square meter
Viewing Angle	>60°
Display Life Expectancy	10 years typical
Lifting Mechanism	2,000 lb. capacity electro-hydraulic

TRAILER

Length Overall (Towing).....	186" (472 cm)
Width Overall.....	92" (234 cm)
Height Traveling	103" (262 cm)
Height Operating	164" (417 cm)
Ground Clearance	13" (33 cm) minimum
Weight (minimum)	2,900 lbs. (1,315 kg)
Weight (maximum)	3,500 lbs. (1,588 kg)
Coupler	2" (50 mm) ball or 3" (76 mm) pintle ring
Axle/Suspension	Torq flex independent

MICROTECH CONTROL CONSOLE

Console Circuitry	Ultra-low power solid state
Console Touchpad	Weather-resistant, backlit, five-button touchpad
Programming Software	Proprietary with automatic remotely managed upgrades (field upgradable for units not connected to Command Center)
Message Display Time	User-selectable (0.1 to 99 seconds)
Display Update Time	Instantaneous (nearly)
Non-Volatile Memory	16 GB Micro SD card
Password Protection	User-selectable, all level access
Operator Interface	Easy-to-navigate menus (no manual required)
Connectivity	Supports NTCIP version 3 via UDP/IP over Ethernet, and PMPP over RS-232; Units with Remote Communications Option: UDP/IP over the built in cellular modem

ENERGY SOURCE

Operating Voltage	12 Volts DC (nominal)
Battery Type	6 Volt heavy duty, deep cycle (GC-2)
Number of Batteries	Four (4) standard lead acid (flooded)
Battery Bank Capacity	520 amp hours
Battery Status Indicator	Displays battery voltage, charging activity and low battery condition
Solar Array Construction	Top-mounted solar panels in aluminum frame
Solar Array Power Output	Standard 160 watt (nominal)
Solar Charge Controller	Automatic, temperature compensated, MPPT (Maximum Power Point Tracking)



UPGRADES and OPTIONS

MEGATECH CONTROLLER OPTION



- Touch-screen controller
- Simple one page user interface
- Password Protection: Ability to assign up to 50 passwords with levels of access

SOLAR ARRAY UPGRADES

Both Fixed and Tilt & Rotate Units: 220 watt
With MegaTech Controller Upgrade: 270, 330, 440, 490 watt

BATTERY UPGRADES

Type	Number	Capacity
Lead-Acid (flooded)	Six (6)	780 amp hour
	Eight (8)	1040 amp hour
	Ten (10)	1300 amp hour
	Twelve (12)	1560 amp hour
Gel Cell or AGM (maintenance-free)	Four (4)	520 amp hour
	Six (6)	780 amp hour
	Eight (8)	1040 amp hour
	Ten (10)	1300 amp hour
	Twelve (12)	1560 amp hour

BATTERY CHARGER UPGRADE

- 45 amp, 120 volt AC
- 55 amp, 120 volt AC
- 90 amp, 120 volt AC

BRAKES

- Hydraulic Surge Brakes (5,000 lb. Capacity)
- Electric Brakes

BATTERY SECURITY OPTION

- Anti-theft steel frame bolted to trailer
- Vandal-Proof Battery Box reinforced steel cage

RADAR OPTIONS

- Directional doppler K-Band. User-configurable KPH or MPH. Data Collection and Statistical Analysis Package included.



SOLAR TECHNOLOGY, INC.
7620 Cetronia Rd. Allentown, PA 18106
Phone: 800-475-5442 or 610-391-8600



SCAN ME



www.solartechology.com